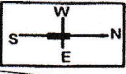


SITE PLAN SHOWING THE SCHOOL BUILDING DOUBLE STOREY BELONGING TO HARVARD INTERNATIONAL SCHOOL SITUATED AT VILL-BHATOLI, P/O-MAND PANDHER TEHSIL-DASUYA, DISTT-HOSHIARPUR, PUNJAB (INDIA)

SCALE-1"=16'-0"

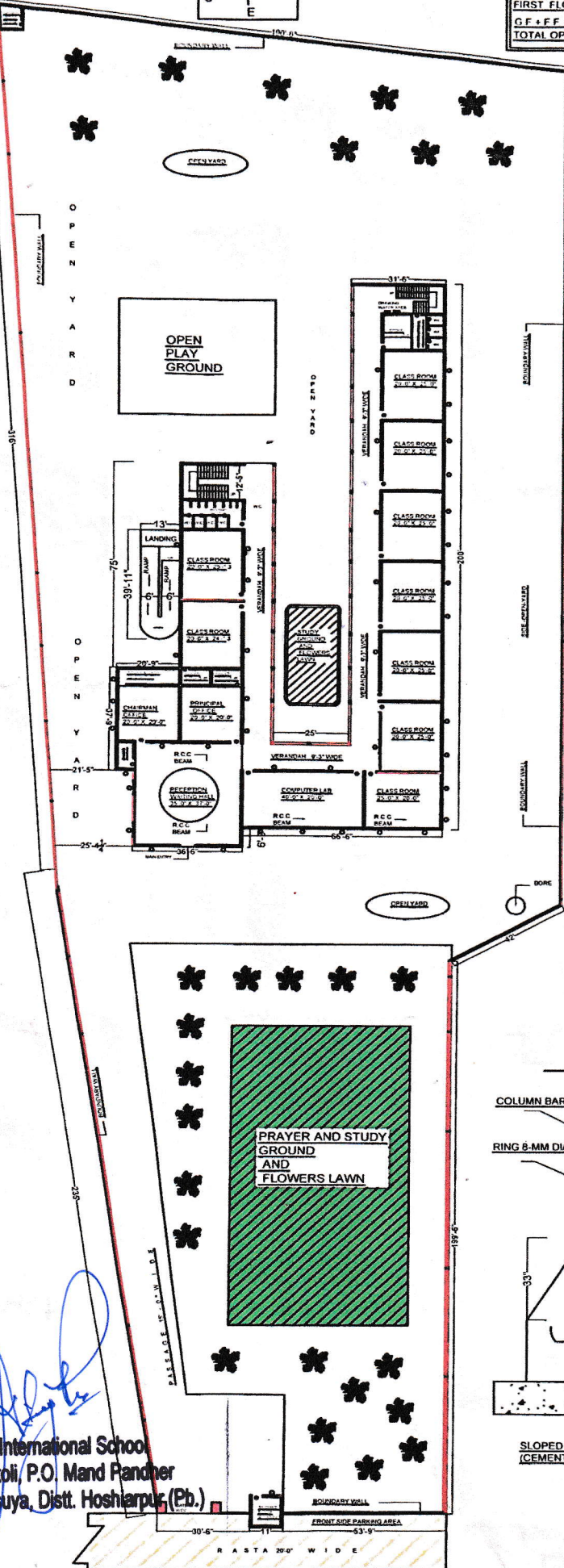
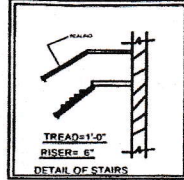
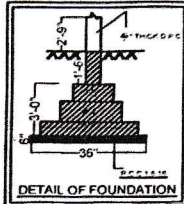
REFERENCES -

- SHOWN AS HARVARD INTERNATIONAL SCHOOL DOUBLE-STOREY BUILDING
- SHOWN AS RASTA

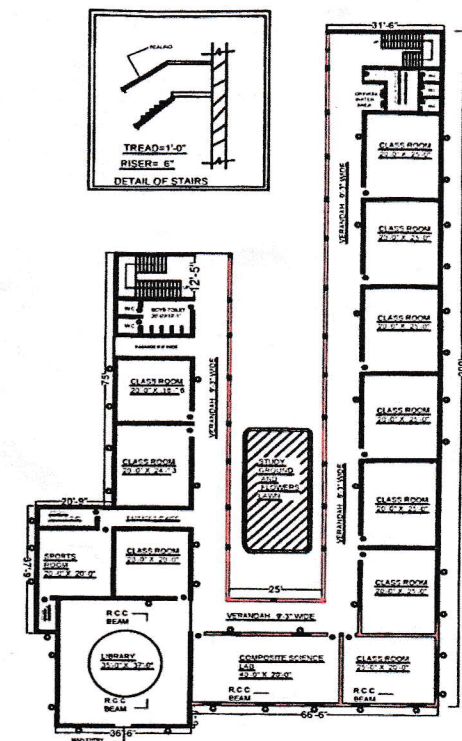


TOTAL PLOT AREA - 2 ACRE OR 320 MARLAS OR 87120 SQ FT OR 8093.48 SQ M OR 9680.00 SQ Y
GROUND FLOOR COVD AREA - 12894.75 SQ FT OR 1197.92 SQ M OR 1432.75 SQ Y
FIRST FLOOR COVD AREA - 12768.25 SQ FT OR 1188.17 SQ M OR 1418.69 SQ Y
G.F. + F.F. COVD AREA - 25663 SQ FT OR 2394.09 SQ M OR 2851.44 SQ Y
TOTAL OPEN AREA - 100014.75 SQ FT OR 9291.37 SQ M OR 11112.72 SQ Y

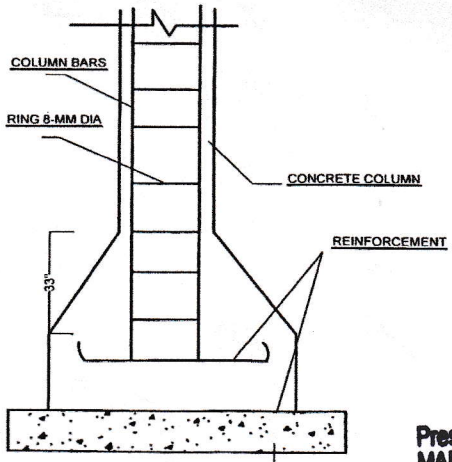
- JOINERY DOOR'S & WINDOWS**
- 1 ALL DOORS 3'-6" WIDE AND 7'-0" HIEGHT
 - 2 WINDOWS 5'-0" X 5'-0"
 - 3 R.C.C SLAB 1'2" 4.5" THICK
 - 4 ALL WALL 9" THICK IS A CLASS BRICK WORK



GROUND FLOOR PLAN - NO. 1



FIRST FLOOR PLAN - NO. 2



SLOPED 1 ISOLATED FOOTING (CEMENT CONCRETE REINFORCEMENT PILLAR)

Principal
Harvard International School
Vill. Bhatoli, P.O. Mand Pandher
Teh. Dasuya, Distt. Hoshiarpur, (Pb.)

President
MANAGING COMMITTEE
Harvard International School
Vill. Bhatoli, P.O. Mand Pandher
Teh. Dasuya, Distt. Hoshiarpur, (Pb.)

Sub Divisional Engineer,
Construction Sub-Division No. 2
Fud. & B. Hoshiarpur

ER VISHAL BHARDWAJ
Planner, Estimator, Valuator
Licence No. 36/1251/14
Bangalore Chugh, & Associates

(SIGNATURE OF PRINCIPAL)

VISHAL & ASSOCIATES
ENGINEERS & ARCHITECTS